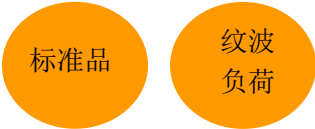


- 保证 105℃ 2000 小时
- 适用于智能消防巡检数字控制柜、消防巡检高频控制柜  
 舰船自动充放电装置、岸电稳压自动补偿装置  
 UPS 舰船电源装置、各类电气控制设备、低压系统网络监测装置  
 电池检测设备、有源滤波柜、锡膏印刷机



◆规格表

项目	特性	
工作温度范围	-40~+105℃ (10~100 <sub>VDC</sub> ) -25~+105℃ (160~400 <sub>VDC</sub> )	
额定电压范围	10~450 <sub>VDC</sub>	
静电容量容许差	± 20% (M)	20℃/120HZ
漏电流	I=0.02CV 或者 5mA 中任意一个较小值 I:漏电流 (μA)、C:静电容量 (μF)、额定电压 (VDC)	20℃/5 分钟值
损失角正切值 (tanδ)	≤标准品一览表值	20℃/120HZ
温度特性	静电容量变化率 C (-25℃) / C (+20℃) ≥ 0.7	20℃/120HZ
绝缘电阻	全部端子和容器套上的绝缘套且安装的固定带之间用 DC500V 的绝缘电阻测定仪测出的值 ≥ 100MΩ	
绝缘耐压	全部端子和容器套的绝缘套且安装的固定带之间施加 AC2000V 的电压 1 分钟未出现异常。	
耐久性	在 105℃ 环境下, 不超过额定电压的范围内叠加额定纹波电流, 连续加载额定电压 2000 小时后, 待温度恢复到 20℃ 进行测量时, 满足以下要求。	
	静电容量变化率	≤ 初始值的 ±20%
	损失角正切值	≤ 初始规格值的 200%
	漏电流	≤ 初始规格值
高温无负荷特性	在 105℃ 环境下, 无负荷放置 1000 小时后待温度恢复到 20℃, 进行试验前处理 (JIS C 5101-4 4.1 项) 后进行测量时, 应满足以下要求	
	静电容量变化率	≤ 初始值的 ±20%
	损失角正切值	≤ 初始规格值的 200%
	漏电流	≤ 初始规格值

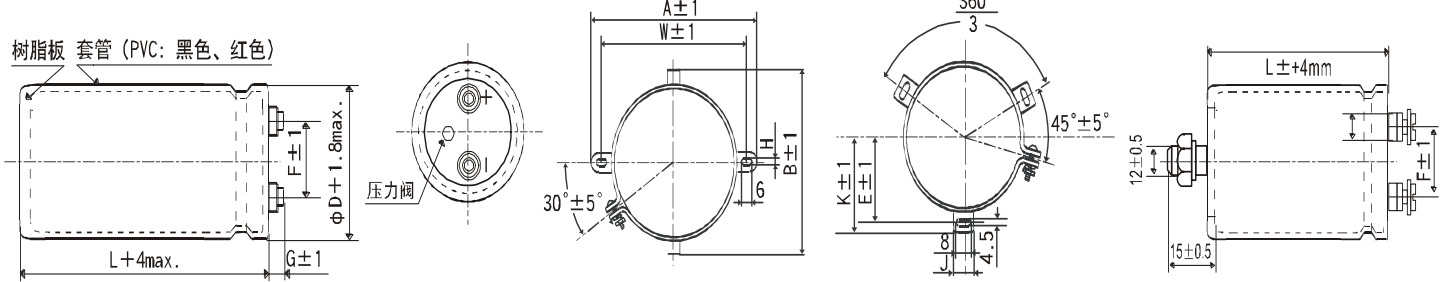
◆尺寸图 [mm]

●端子代码 : M5

●绑带代码 : B

●绑带代码 : C

●无绑带代码 : N



035~ 063.5: G=6

076.2~ 089: G=5

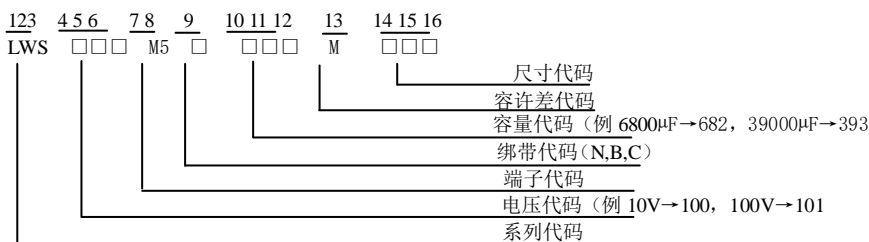
端子螺丝规格

~ 089 + 字六角长螺丝 M5\*0.8\*10 M6\*1.0\*10 0100 + 字圆型小螺丝 M8\*1.25\*16

螺丝拧紧最大容许转矩 3.23N.m 弹簧圈、平垫圈, 螺丝拧紧最大容许转矩 6.31N.m

∅D	A	B	W	H	F
35	58.0	44.0	48.0	3.5	12.7
50	78.0	64.0	68.0	4.5	22.4
63.5	90.0	76.0	80.0	4.5	28.0
76.2	104.5	90.0	93.5	4.5	31.5

◆产品型号体系



产品型号代码的详细介绍请参考 (产品型号的代表法 (螺丝端子型))

∅D	E	K	F	J
50	32.5	37.0	14.0	22.4
63.5	38.1	43.5	28.0	14.0
76.2	44.5	50.0	31.5	14.0
89	50.8	56.5	31.5	16.0
100	56.5	63.4	41.5	18.0



标准品一览表

工作电压 [V]	额定容量 [ $\mu$ F]	外壳尺寸 D x L [mm]	损耗角 120HZ, 20 °C [tan $\delta$ ]	额定纹波电流 (Ams/105 °C, 120HZ)	产品型号	工作电压 [V]	额定容量 [ $\mu$ F]	外壳尺寸 D x L [mm]	损耗角 120HZ, 20 °C [tan $\delta$ ]	额定纹波电流 (Ams/105 °C, 120HZ)	产品型号	
10	27000	35*50	0.45	4.9	LWS100M5B273MA50	25	33000	35*80	0.40	6.7	LWS250M5B333MA80	
	33000	35*50	0.50	5.1	LWS100M5B333MA50		39000	35*100	0.40	7.8	LWS250M5B393MAA0	
	39000	35*60	0.50	5.9	LWS100M5B393MA60		47000	35*120	0.40	9.3	LWS250M5B473MAC0	
	47000	35*80	0.50	7.1	LWS100M5B473MA80		56000	50*80	0.45	9.7	LWS250M5C563MC80	
	56000	35*80	0.60	7.1	LWS100M5B563MA80		68000	50*100	0.45	11.2	LWS250M5C683MCA0	
	68000	35*100	0.60	8.5	LWS100M5B683MAA0		82000	50*100	0.50	11.2	LWS250M5C823MCA0	
	82000	35*100	0.65	8.9	LWS100M5B823MAA0		100000	50*120	0.50	14.8	LWS250M5C104MCC0	
	100000	35*120	0.65	10.7	LWS100M5B104MAC0		120000	63.5*100	0.65	14.9	LWS250M5C124MDA0	
	120000	50*80	0.75	11	LWS100M5C124MC80		150000	63.5*120	0.65	17.9	LWS250M5C154MDC0	
	150000	50*100	0.80	13.2	LWS100M5C154MCA0		180000	63.5*120	0.80	17.9	LWS250M5C184MDC0	
	180000	50*120	0.80	15.7	LWS100M5C184MCC0		220000	76.2*120	0.85	21.3	LWS250M5C224MEC0	
	220000	50*120	0.85	16.8	LWS100M5C224MCC0		270000	76.2*120	1.0	21.7	LWS250M5C274MEC0	
	270000	63.5*120	1.0	19.6	LWS100M5C274MDC0		330000	76.2*140	1.2	23.4	LWS250M5C334MEE0	
	330000	63.5*120	1.2	19.7	LWS100M5C334MDC0		390000	89*140	1.5	24.9	LWS250M5C394MFE0	
	390000	76.2*120	1.5	21.3	LWS100M5C394MEC0		35	8200	35*50	0.30	3.3	LWS350M5B822MA50
	470000	76.2*120	1.8	21.4	LWS100M5C474MEC0			10000	35*50	0.30	3.6	LWS350M5B103MA50
	560000	76.2*140	2.0	23.6	LWS100M5C564MEE0			12000	35*60	0.30	4.2	LWS350M5B123MA60
	680000	89*140	2.4	26	LWS100M5C684MFE0			15000	35*60	0.30	4.7	LWS350M5B153MA60
16	18000	35*50	0.4	4.2	LWS160M5B183MA50	18000		35*80	0.30	5.7	LWS350M5B183MA80	
	22000	35*50	0.4	4.7	LWS160M5B223MA50	22000		35*80	0.30	6.3	LWS350M5B223MA80	
	27000	35*60	0.4	5.5	LWS160M5B273MA60	27000		35*100	0.30	7.5	LWS350M5B273MAA0	
	33000	35*60	0.45	5.7	LWS160M5B333MA60	33000		35*120	0.30	9	LWS350M5B333MAC0	
	39000	35*80	0.45	6.8	LWS160M5B393MA80	39000		50*80	0.35	9.2	LWS350M5C393MC80	
	47000	35*80	0.50	7.1	LWS160M5B473MA80	47000		50*100	0.35	11.2	LWS350M5C473MCA0	
	56000	35*100	0.50	8.4	LWS160M5B563MAA0	56000		50*100	0.40	11.4	LWS350M5C563MCA0	
	68000	35*100	0.55	8.8	LWS160M5B683MAA0	68000		50*120	0.40	13.6	LWS350M5C683MCC0	
	82000	50*80	0.55	10.7	LWS160M5C823MC80	82000		63.5*100	0.45	14.8	LWS350M5C823MDA0	
	100.000	50*80	0.65	10.8	LWS160M5C104MC80	100000		63.5*120	0.45	17.6	LWS350M5C104MDC0	
	120000	50*100	0.65	13.1	LWS160M5C124MCA0	120000		63.5*120	0.55	17.6	LWS350M5C124MDC0	
	150000	50*120	0.70	15.3	LWS160M5C154MCC0	150000		76.2*120	0.65	19.8	LWS350M5C154MEC0	
	180000	50*120	0.8	15.7	LWS160M5C184MCC0	180000		76.2*120	0.80	19.8	LWS350M5C184MEC0	
	220000	63.5*120	0.85	19.2	LWS160M5C224MDC0	220000		76.2*140	0.80	23.4	LWS350M5C224MEE0	
	270000	63.5*120	1.0	19.6	LWS160M5C274MDC0	270000	89*140	1.0	25.5	LWS350M5C274MFE0		
	330000	76.2*120	1.3	21.1	LWS160M5C334MEC0	50	3900	35*50	0.20	2.8	LWS500M5B392MA50	
	390000	76.2*120	1.5	21.3	LWS160M5C394MEC0		4700	35*50	0.20	3.1	LWS500M5B472MA50	
	470000	76.2*140	1.6	24.2	LWS160M5C474MEE0		5600	35*50	0.20	3.3	LWS500M5B562MA50	
560000	89*140	2.0	28.1	LWS160M5C564MFE0	6800		35*50	0.25	3.3	LWS500M5B682MA50		
680000	89*140	2.4	28.5	LWS160M5C684MFE0	8200		35*60	0.25	3.8	LWS500M5B822MA60		
25	12000	35*50	0.35	3.7	LWS250M5B123MA50		10000	35*80	0.25	4.6	LWS500M5B103MA80	
	15000	35*50	0.35	4.1	LWS250M5B153MA50		12000	35*80	0.25	5.1	LWS500M5B123MA80	
	18000	35*60	0.35	4.8	LWS250M5B183MA60		15000	35*80	0.25	5.7	LWS500M5B153MA80	
	22000	35*60	0.35	5.3	LWS250M5B223MA60		18000	35*100	0.25	6.7	LWS500M5B183MAA0	
	27000	35*80	0.35	6.4	LWS250M5B273MA80		22000	35*120	0.25	8.1	LWS500M5B223MAC0	



标准品一览表

工作电压 [V]	额定容量 [ $\mu$ F]	外壳尺寸 D x L [mm]	损耗角 120HZ, 20 °C [tan $\delta$ ]	额定纹波电流 (Ams/105 °C, 120HZ)	产品型号	工作电压 [V]	额定容量 [ $\mu$ F]	外壳尺寸 D x L [mm]	损耗角 120HZ, 20 °C [tan $\delta$ ]	额定纹波电流 (Ams/105 °C, 120HZ)	产品型号
50	27000	50*80	0.25	9.1	LWS500M5C273MCC80	80	18000	50*120	0.20	9.9	LWS800M5C183MCCO
	33000	50*100	0.25	11.1	LWS500M5C333MCA0		22000	50*120	0.20	11.0	LWS800M5C223MCCO
	39000	50*120	0.25	13.1	LWS500M5C393MCCO		27000	63.5*100	0.25	11.4	LWS800M5C273MDA0
	47000	50*120	0.30	13.9	LWS500M5C473MCCO		33000	76.2*100	0.25	13.9	LWS800M5C333MEA0
	56000	63.5*100	0.35	13.9	LWS500M5C563MDA0		39000	76.2*100	0.30	13.9	LWS800M5C393MEA0
	68000	63.5*120	0.35	16.6	LWS500M5C683MDCO		47000	76.2*120	0.30	16.5	LWS800M5C473MECO
	82000	76.2*120	0.40	18.9	LWS500M5C823MECO		56000	76.2*120	0.30	18.1	LWS800M5C563MECO
	100000	76.2*120	0.45	19.5	LWS500M5C104MECO		68000	76.2*140	0.35	19.7	LWS800M5C683MEE0
	120000	76.2*120	0.55	19.5	LWS500M5C124MECO		82000	89*140	0.40	22.1	LWS800M5C823MFE0
	150000	89*140	0.6	23.9	LWS500M5C154MFE0		100	1800	35*50	0.10	2.7
180000	89*140	0.75	23.9	LWS500M5C184MFE0	2200	35*50		0.10	3.0	LWS101M5B222MA50	
63	2700	35*50	0.20	2.3	LWS630M5B272MA50	2700		35*60	0.10	3.5	LWS101M5B272MA60
	3300	35*50	0.20	2.5	LWS630M5B332MA50	3300		35*80	0.10	4.2	LWS101M5B332MA80
	3900	35*50	0.20	2.8	LWS630M5B392MA50	3900		35*80	0.12	4.2	LWS101M5B392MA80
	4700	35*50	0.20	3.1	LWS630M5B472MA50	4700		35*100	0.12	5.0	LWS101M5B472MAA0
	5600	35*60	0.20	3.5	LWS630M5B562MA60	5600		35*100	0.12	5.4	LWS101M5B562MAA0
	6800	35*60	0.20	3.9	LWS630M5B682MA60	6800		35*120	0.15	5.8	LWS101M5B682MACO
	8200	35*80	0.20	4.7	LWS630M5B822MA80	8200		50*80	0.15	6.4	LWS101M5C822MC80
	10000	35*80	0.25	4.7	LWS630M5B103MA80	10000		50*100	0.15	7.8	LWS101M5C103MCA0
	12000	35*100	0.25	5.5	LWS630M5B123MAA0	12000		50*120	0.15	9.3	LWS101M5C123MCCO
	15000	35*120	0.25	6.6	LWS630M5B153MACO	15000		50*120	0.15	10.4	LWS101M5C153MCCO
	18000	50*80	0.25	7.4	LWS630M5C183MC80	18000		63.5*100	0.20	10.4	LWS101M5C183MDA0
	22000	50*100	0.25	9.0	LWS630M5C223MCA0	22000		63.5*120	0.20	12.5	LWS101M5C223MDCO
	27000	50*120	0.25	10.9	LWS630M5C273MCCO	27000		76.2*120	0.25	13.7	LWS101M5C273MECO
	33000	50*120	0.25	12	LWS630M5C333MCCO	33000		76.2*120	0.25	15.2	LWS101M5C333MECO
39000	63.5*100	0.30	12.5	LWS630M5C393MDA0	39000	76.2*140		0.30	16.1	LWS101M5C393MEE0	
47000	63.5*120	0.30	14.9	LWS630M5C473MDCO	47000	89*140		0.30	19.3	LWS101M5C473MFE0	
56000	63.5*120	0.30	16.3	LWS630M5C563MDCO	56000	89*140	0.30	21.1	LWS101M5C563MFE0		
68000	76.2*120	0.35	18.4	LWS630M5C683MECO	160	560	35*50	0.15	1.2	LWS161M5B561MA50	
82000	76.2*140	0.40	20	LWS630M5C823MEE0		680	35*50	0.15	1.3	LWS161M5B681MA50	
100000	76.2*140	0.50	20	LWS630M5C104MEE0		820	35*50	0.15	1.4	LWS161M5B821MA50	
120000	89*140	0.60	21.8	LWS630M5C124MFE0		1000	35*50	0.15	1.6	LWS161M5B102MA50	
80	2200	35*50	0.15	2.4		LWS800M5B222MA50	1200	35*60	0.15	1.9	LWS161M5B122MA60
	2700	35*50	0.15	2.7		LWS800M5B272MA50	1500	35*60	0.15	2.1	LWS161M5B152MA60
	3300	35*50	0.15	3.0		LWS800M5B332MA50	1800	35*60	0.15	2.5	LWS161M5B182MA80
	3900	35*60	0.15	3.4		LWS800M5B392MA60	2200	35*80	0.15	2.8	LWS161M5B222MA80
	4700	35*60	0.15	3.7		LWS800M5B472MA60	2700	35*100	0.15	3.3	LWS161M5B272MAA0
	5600	35*80	0.15	4.5		LWS800M5B562MA80	3300	35*120	0.15	3.8	LWS161M5B332MACO
	6800	35*80	0.15	4.9		LWS800M5B682MA80	3900	50*80	0.20	3.8	LWS161M5C392MC80
	8200	35*100	0.20	5.1		LWS800M5B822MAA0	4700	50*100	0.20	4.6	LWS161M5C472MCA0
	10000	35*120	0.20	6.1		LWS800M5B103MACO	5600	50*100	0.20	5.1	LWS161M5C562MCA0
	12000	50*80	0.20	6.7		LWS800M5C123MC80	6800	50*120	0.20	6.1	LWS161M5C682MCCO
15000	50*100	0.20	8.3	LWS800M5C153MCA0	8200	63.5*100	0.20	7.0	LWS161M5C822MDA0		



标准品一览表

工作电压 [V]	额定容量 [ $\mu$ F]	外壳尺寸 D x L [mm]	损耗角 120HZ, 20 °C [tan $\delta$ ]	额定纹波电流 (Ams/105 °C, 120HZ)	产品型号	工作电压 [V]	额定容量 [ $\mu$ F]	外壳尺寸 D x L [mm]	损耗角 120HZ, 20 °C [tan $\delta$ ]	额定纹波电流 (Ams/105 °C, 120HZ)	产品型号
160	10000	63.5*120	0.20	8.4	LWS161M5C103MDCO	250	4700	63.5*120	0.20	5.7	LWS251M5C472MDCO
	12000	76.2*100	0.20	9.4	LWS161M5C123MEA0		5600	63.5*120	0.20	6.3	LWS251M5C562MDCO
	15000	76.2*120	0.20	11.4	LWS161M5C153MECO		6800	76.2*120	0.20	7.7	LWS251M5C682MECO
	18000	76.2*140	0.20	13.4	LWS161M5C183MEE0		8200	76.2*120	0.20	8.4	LWS251M5C822MECO
	22000	89*140	0.25	14.5	LWS161M5C223MFE0		10000	76.2*140	0.20	10.0	LWS251M5C103MEE0
	27000	89*140	0.25	16	LWS161M5C273MFE0		12000	89*140	0.20	11.9	LWS251M5C123MFE0
200	330	35*50	0.15	0.9	LWS201M5B331MA50	315	180	35*50	0.10	0.8	LWS3B1M5B181MA50
	390	35*50	0.15	1.0	LWS201M5B391MA50		220	35*50	0.10	0.9	LWS3B1M5B221MA50
	470	35*50	0.15	1.1	LWS201M5B471MA50		270	35*50	0.10	1.0	LWS3B1M5B271MA50
	560	35*50	0.15	1.2	LWS201M5B561MA50		330	35*50	0.10	1.1	LWS3B1M5B331MA50
	680	35*50	0.15	1.3	LWS201M5B681MA50		390	35*50	0.10	1.2	LWS3B1M5B391MA50
	820	35*50	0.15	1.4	LWS201M5B821MA50		470	35*60	0.10	1.4	LWS3B1M5B471MA60
	1000	35*60	0.15	1.7	LWS201M5B102MA60		560	35*60	0.10	1.5	LWS3B1M5B561MA60
	1200	35*60	0.15	1.9	LWS201M5B122MA60		680	35*80	0.10	1.7	LWS3B1M5B681MA80
	1500	35*80	0.15	2.3	LWS201M5B152MA80		820	35*80	0.15	1.7	LWS3B1M5B821MA80
	1800	35*80	0.15	2.5	LWS201M5B182MA80		1000	35*100	0.15	2.0	LWS3B1M5B102MAA0
	2200	35*100	0.15	3.0	LWS201M5B222MAA0		1200	35*120	0.15	2.4	LWS3B1M5B122MACO
	2700	35*120	0.15	3.6	LWS201M5B272MACO		1500	50*80	0.15	2.7	LWS3B1M5C152MC80
	3300	50*80	0.15	4.1	LWS201M5C332MC80		1800	50*100	0.15	3.3	LWS3B1M5C182MCA0
	3900	50*100	0.15	4.9	LWS201M5C392MCA0		2200	50*120	0.15	4.0	LWS3B1M5C222MCCO
	4700	63.5*100	0.20	5.3	LWS201M5C472MDA0		2700	50*120	0.15	4.4	LWS3B1M5C272MCCO
	5600	63.5*100	0.20	5.8	LWS201M5C562MDA0		3300	63.5*100	0.15	5.1	LWS3B1M5C332MDA0
	6800	63.5*120	0.20	6.9	LWS201M5C682MDCO		3900	63.5*120	0.15	6.0	LWS3B1M5C392MDCO
	8200	63.5*120	0.20	7.6	LWS201M5C822MDCO		4700	76.2*100	0.15	6.8	LWS3B1M5C472MEA0
	10000	76.2*120	0.20	9.3	LWS201M5C103MECO		5600	76.2*120	0.15	8.0	LWS3B1M5C562MECO
	12000	76.2*120	0.20	10.2	LWS201M5C123MECO		6800	76.2*130	0.15	9.2	LWS3B1M5C682MEDO
15000	76.2*140	0.20	12.2	LWS201M5C153MEE0	8200	89*140	0.15	11.4	LWS3B1M5C822MFE0		
18000	89*140	0.25	13.1	LWS201M5C183MFE0	10000	89*140	0.15	12.6	LWS3B1M5C103MFE0		
250	270	35*50	0.15	0.8	LWS251M5B271MA50	350	180	35*50	0.10	0.8	LWS351M5B181MA50
	330	35*50	0.15	0.9	LWS251M5B331MA50		220	35*50	0.10	0.9	LWS351M5B221MA50
	390	35*50	0.15	1.0	LWS251M5B391MA50		270	35*50	0.10	1.0	LWS351M5B271MA50
	470	35*50	0.15	1.1	LWS251M5B471MA50		330	35*50	0.10	1.1	LWS351M5B331MA50
	560	35*50	0.15	1.2	LWS251M5B561MA50		390	35*60	0.10	1.3	LWS351M5B391MA60
	680	35*60	0.15	1.4	LWS251M5B681MA60		470	35*60	0.10	1.4	LWS351M5B471MA60
	820	35*80	0.15	1.6	LWS251M5B821MA80		560	35*80	0.1	1.6	LWS351M5B561MA80
	1000	35*80	0.20	1.6	LWS251M5B102MA80		680	35*80	0.15	1.6	LWS351M5B681MA80
	1200	35*80	0.20	1.8	LWS251M5B122MA80		820	35*100	0.15	1.8	LWS351M5B821MAA0
	1500	35*100	0.20	2.1	LWS251M5B152MAA0		1000	35*120	0.15	2.2	LWS351M5B102MACO
	1800	35*120	0.20	2.5	LWS251M5B182MACO		1200	50*80	0.15	2.4	LWS351M5C122MC80
	2200	50*80	0.20	2.9	LWS251M5C222MC80		1500	50*100	0.15	3.0	LWS351M5C152MCA0
	2700	50*100	0.20	3.5	LWS251M5C272MCA0		1800	50*120	0.15	3.6	LWS351M5C182MCCO
	3300	50*120	0.20	4.2	LWS251M5C332MCCO		2200	50*120	0.15	4.0	LWS351M5C222MCCO
	3900	50*120	0.20	4.6	LWS251M5C392MCCO		2700	63.5*100	0.15	4.6	LWS351M5C272MDA0



标准品一览表

工作电压 [V]	额定容量 [ $\mu$ F]	外壳尺寸 D x L [mm]	损耗角 120HZ, 20 °C [tan $\delta$ ]	额定纹波电流 (Ams/105 °C, 120HZ)	产品型号	工作电压 [V]	额定容量 [ $\mu$ F]	外壳尺寸 D x L [mm]	损耗角 120HZ, 20 °C [tan $\delta$ ]	额定纹波电流 (Ams/105 °C, 120HZ)	产品型号
350	3900	76.2*120	0.15	6.7	LWS351M5C392MECO	450	1000	50*75	0.15	5.0	LWS451M5C102MC75
	5600	76.2*130	0.15	8.3	LWS351M5C562MEDO		1200	50*96	0.15	6.0	LWS451M5C122MC96
	6800	76.2*140	0.15	9.5	LWS351M5C682MEE0		1500	50*115	0.15	7.2	LWS451M5C152MCB5
	8200	89*140	0.15	11.4	LWS351M5C822MFE0		1800	50*130	0.15	8.3	LWS451M5C182MCD0
400	180	35*50	0.10	0.8	LWS401M5B181MA50		2200	63.5*96	0.15	9.0	LWS451M5C222MD96
	220	35*50	0.10	0.9	LWS401M5B221MA50		2700	63.5*115	0.15	10.7	LWS451M5C272MDB5
	270	35*50	0.10	1.0	LWS401M5B271MA50		3900	63.5*130	0.15	12.4	LWS451M5C332MDD0
	330	35*60	0.10	1.2	LWS401M5B331MA60			63.5*155	0.15	14.5	LWS451M5C392MDF5
	390	35*60	0.10	1.3	LWS401M5B391MA60		76.2*115	0.15	13.6	LWS451M5C392MEB5	
	470	35*80	0.10	1.4	LWS401M5B471MA80		4700	63.5*190	0.15	17.5	LWS451M5C472MDK0
	560	35*80	0.15	1.4	LWS401M5B561MA80			76.2*130	0.15	15.6	LWS451M5C472MED0
	680	35*100	0.15	1.7	LWS401M5B681MAA0		5600	76.2*155	0.15	18.3	LWS451M5C562MEF5
	820	35*120	0.15	2.0	LWS401M5B821MAC0		6800	89*155	0.15	21.4	LWS451M5C682MFF5
	1000	50*80	0.15	2.2	LWS401M5C102MC80		8200	89*155	0.15	23.5	LWS451M5C822MFF5
	1200	50*100	0.15	2.7	LWS401M5C122MCA0		10000	89*190	0.15	28.3	LWS451M5C103MFK0
	1500	50*120	0.15	3.3	LWS401M5C152MCC0		12000	89*220	0.15	33.6	LWS451M5C123MFN0
	2200	63.5*100	0.15	4.2	LWS401M5C222MDA0		15000	89*210	0.15	35.1	LWS451M6C153KFP0
	3300	63.5*120	0.15	5.5	LWS401M5C332MDC0		18000	89*230	0.15	37.4	LWS451M6C183KFM0
	4700	76.2*130	0.15	7.6	LWS401M5C472MED0		20000	89*230	0.15	40.2	LWS451M6C183KFM0
	5600	89*140	0.15	9.4	LWS401M5C562MFE0		22000	100*210	0.15	43.2	LWS451M6C183GFP0
6800	89*140	0.15	10.4	LWS401M5C682MFE0	25000	100*230	0.15	45.5	LWS451M6C183GFM0		

◆ 额定纹波电流频率修正系数

纹波频率与标准品一览表的规定值相异时, 请使用小于乘以下表系数所得之值的值。

额定电压 (VDC)	Ød (mm)	频率 (HZ)					
		50	120	300	1K	10K	50K
10~50	Ø35~Ø89	0.95	1.00	1.03	1.05	1.09	1.12
63~80	Ø50~Ø89						
100	Ø63.5~Ø89						
63~80	Ø35	0.90	1.00	1.06	1.10	1.18	1.22
100	Ø50						
100	Ø35						
160~250	Ø76.2、Ø89	0.82	1.00	1.12	1.22	1.3	1.33
160~250	Ø50、Ø63.5						
160~250	Ø35						
315~400	Ø35~Ø89	0.80	1.00	1.19	1.34	1.46	1.52

※铝电解电容器由于在纹波电流叠加时自我发热、温度上升而老化, 每升温 5°C 寿命减少一半。

要想保持长寿命请在使用过程中降低纹波电流。